

The Survey Results of the Set-RandomUID Lab

1 Students' Background

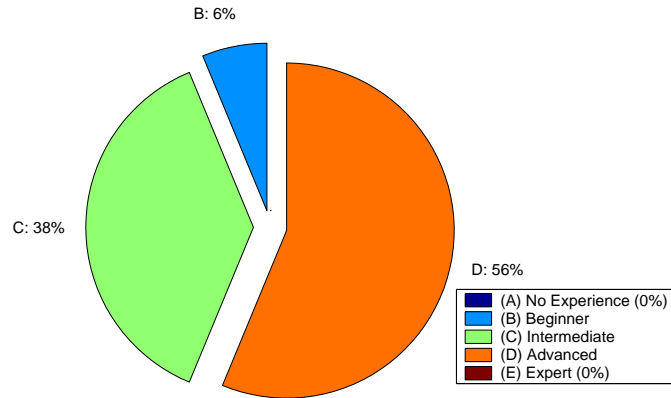


Figure 1: What is your family with the C Language programming?

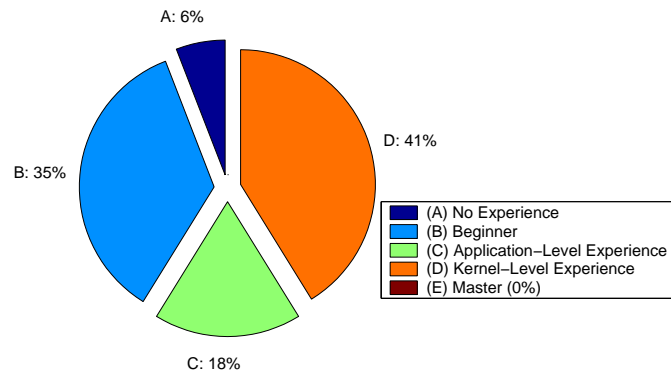


Figure 2: What is your family with Unix?

2 Lab Description and Supporting Materials

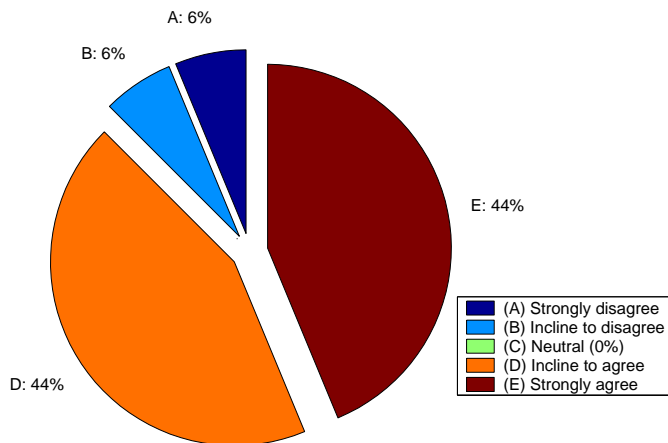


Figure 3: The description of the lab tasks is clear.

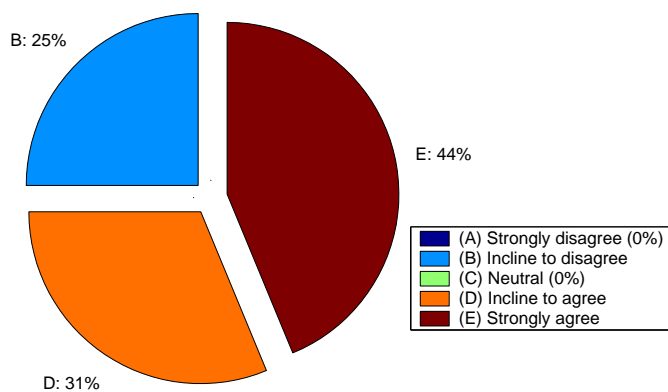


Figure 4: The supporting materials are useful.

3 Students' Perception of the Lab

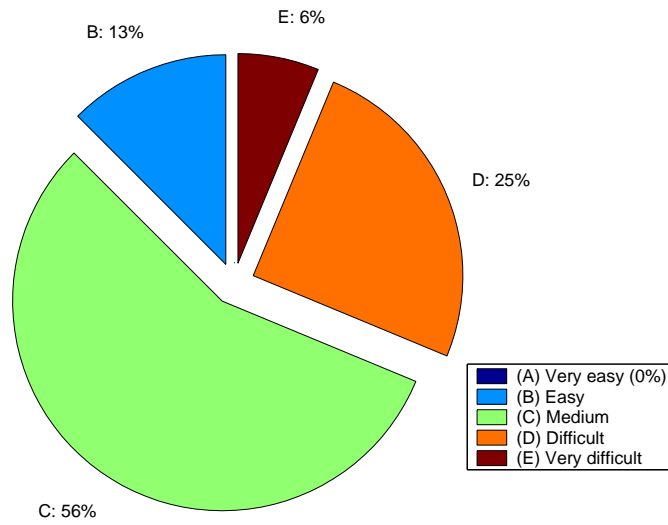


Figure 5: The level of difficulty of the lab:

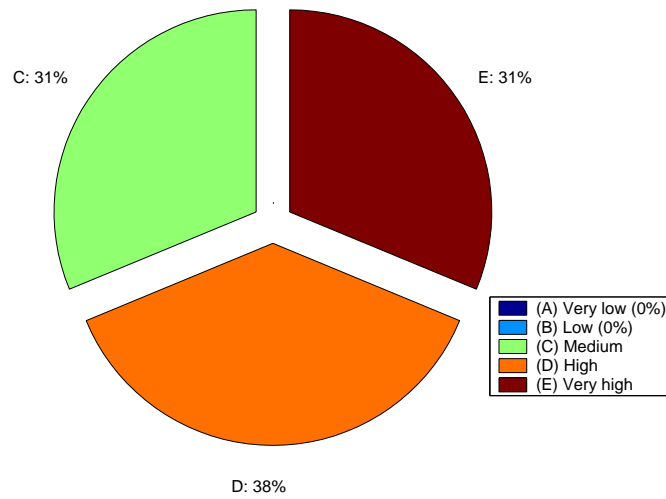


Figure 6: What is your level of interest in this lab?

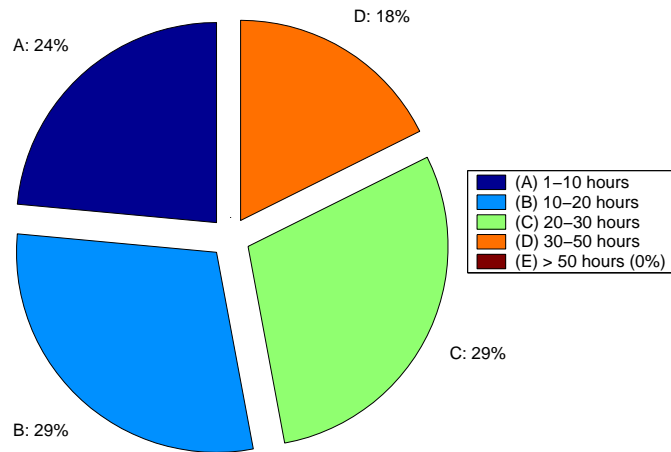


Figure 7: The total amount of time you have spent on this lab:

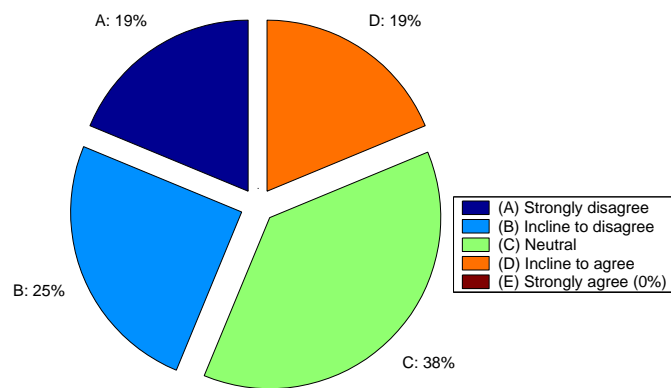


Figure 8: The amount of time you have spent on this lab is too much.

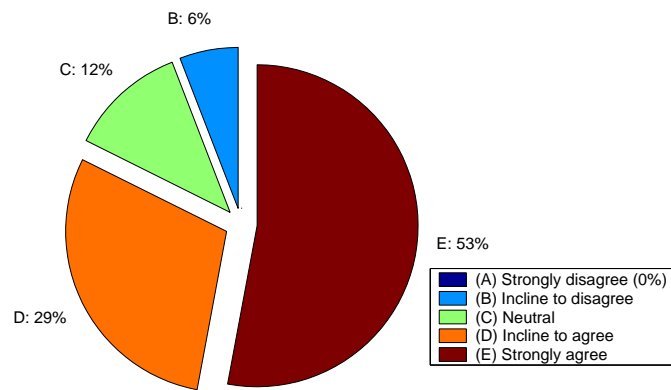


Figure 9: The lab is a valuable part of this course.

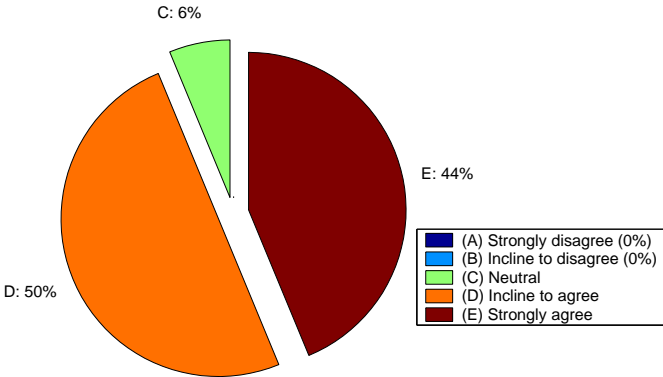


Figure 10: The lab sparks your interest in computer security.